

Insight into Your Lab, Instantly Anytime, Anywhere



StatusScope® Remote Monitoring Service



Welcome to Your Connected Lab

StatusScope® Remote Monitoring connects you to your lab even when you are not there. Gather insight into your lab's operation anytime, from anywhere with the all-in-one mobile enabled asset management platform and business intelligence interface.

Make the Most of Your Time in—and out—of the Lab

Only SCIEX LC-MS systems are compatible with StatusScope Remote Monitoring, the secure, and proactive advanced monitoring tool that offers greater productivity, more instrument uptime and better quality data for your lab.

Be Confident Your LC-MS is Running at Peak Performance

Increase your instrument uptime, as StatusScope Remote Monitoring enables instant alerts of problems. Get real-time status on any of your SCIEX instruments across the globe, and easily report on utilization, sample throughput, and other parameters.

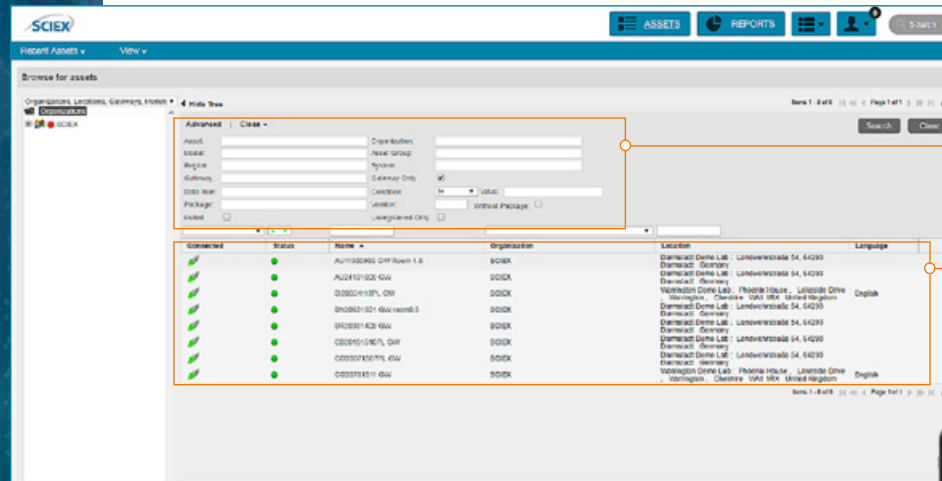
Easy and Secure Remote Monitoring

One-way communication over a standard HTTPS port makes StatusScope Remote Monitoring easy to implement and secure. SCIEX has partnered with technology solution experts PTC and uses the Axeda Machine Cloud service to keep communication private and your proprietary data safe.

Connect your lab now:
sciex.com/statusscope

More Uptime Means Better Productivity

Start with the Asset Tree to see all the SCIEX instruments in your lab, site or across the globe in one view. Automated alarms will tell you immediately if your instrument is down, and our response teams will schedule a service call or perform a remote fix right away.



Filter by Asset Number, Model, Location or several other key criteria to view the information you need.

Available instruments will show green, and stopped instruments will show red.

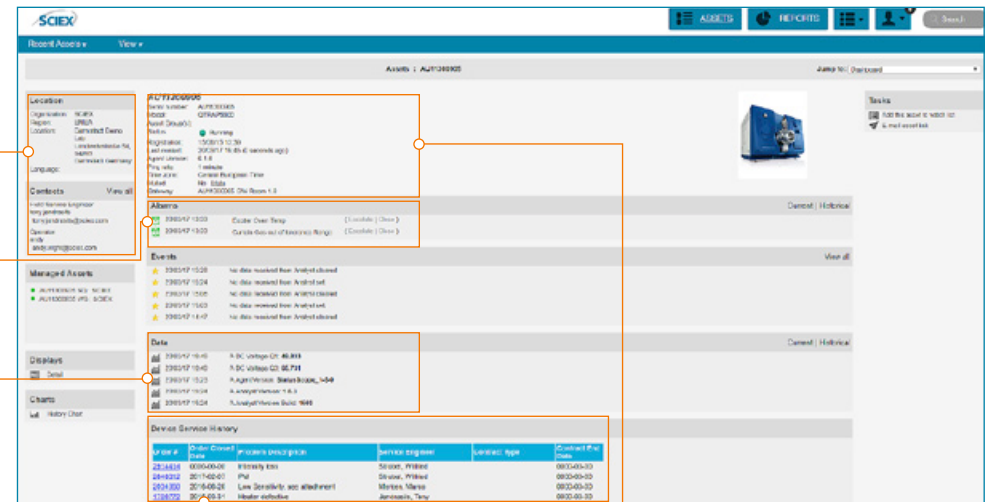


Access anywhere, at anytime

StatusScope Remote Monitoring is **mobile-enabled**, so you can check your sample queue and instrument status from anywhere.

Your Instrument's Health Homepage

The Asset Dashboard is your at-a-glance overview of your instrument's status. See what's running, key instrument parameters, and who to contact if you need help.



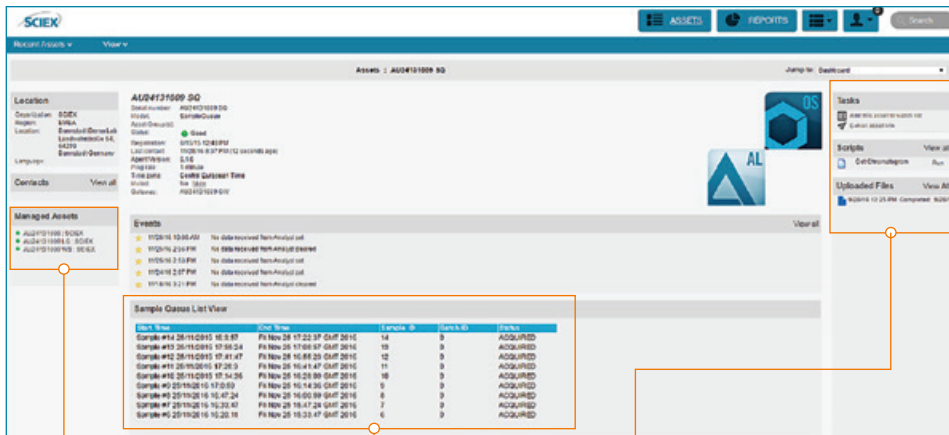
Easily see where your instrument is, and whom to contact for help.

Alarms tell you if your instrument operating parameters are within standard values. When something is wrong, you're notified immediately.

Check instrument performance parameters and update history so you know everything is up to date and running properly.

Check your service history at a glance.

Quickly evaluate the key information and status of your instrument.



Your sample queue has been fully acquired, so your mass spec is ready for the next run. You won't have to click between screens to check.

See your sample queue from anywhere, to determine what's been acquired and what's waiting.

Share a link to this page with another StatusScope Remote Monitoring user in your organization, or look at your most recent chromatogram.

Report Ready

Pull up a StatusScope Remote Monitoring report on any connected device, so you're always ready with answers about throughput, productivity and asset utilization.



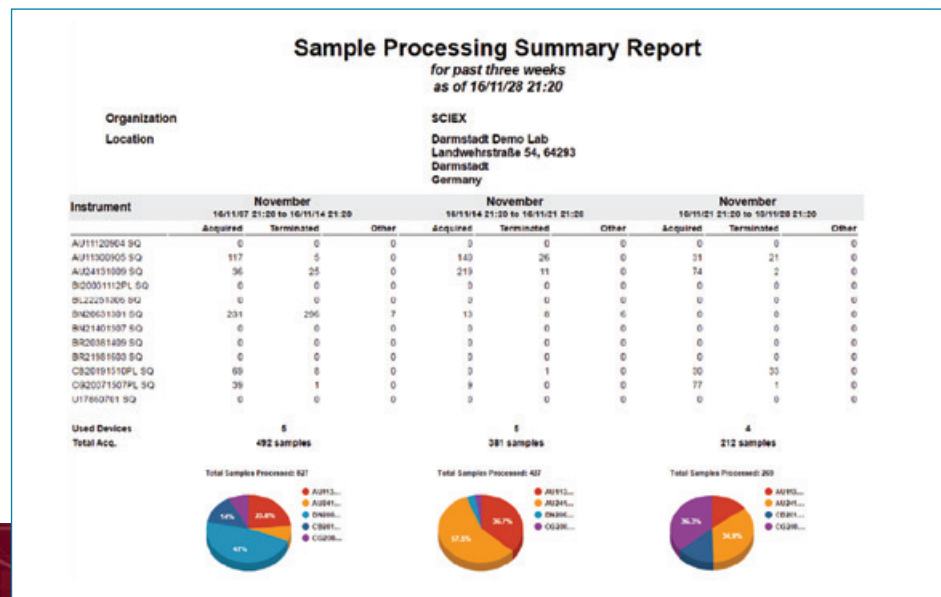
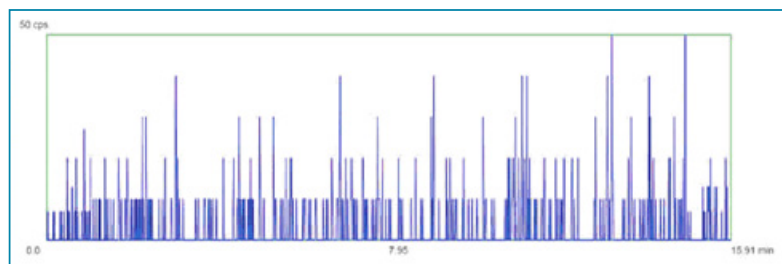
Asset Management, to the Max

When it's time for strategic or capital investment decisions, you'll have access to a variety of useful reports, including:

- Instrument Utilization
- Instrument Alarms
- Instrument Service History
- Sample Processing Summary
- Instrument Inventory

Spend Your Weekend at Home, Not in the Lab

StatusScope Remote Monitoring can show you the last chromatogram acquired on your instrument, so you'll have a quick and easy way to check your sample status. This means fewer unscheduled laboratory visits to monitor your sample run. Only the image of your TIC trace is displayed, so no proprietary information about your assay is communicated.



Hear from an R&D Lab in Spain

"The remote access allows me to routinely access the sample queue and monitor any issues with the instrument even when I am away from the laboratory, saving samples and analyst time. Remote access has also allowed me to see issues on the instrument quickly and resolve the problem, which I would not have been able to do without the tool."

Network Your Way to Success

Discover How the SCIEX Success Network Becomes Your Pathway to Answers

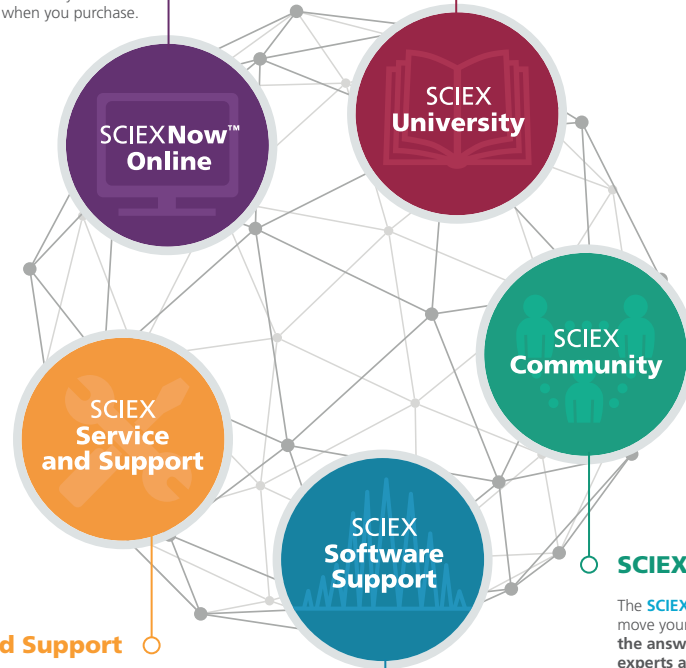
SCIEXNow™ Online

The **SCIEXNow Portal** is the *Everything, Anytime* destination for all your SCIEX support needs. You can keep track of activities that matter most to you and manage your lab in the most efficient way possible. Extensive self-help resources like our deep Knowledge Base, enable you to solve many problems on your own.

SCIEXNow is available 24/7 and your new SCIEX instruments are automatically added to your profile when you purchase.

SCIEXUniversity

SCIEXUniversity offers the most diverse and flexible learning options available, with best-in-class content that helps you to get the most out of your instrument and take your lab to the next level. **Available personalized learning paths based on the latest memory science** ensure better knowledge retention, and automated onboarding and enrollment means you'll get up and running faster.



SCIEX Service and Support

Our mission to help you be successful, whether it's to repair your instrument, assist with your workflows, or help you maximize productivity in your lab. Whatever your challenge, global **SCIEX Service and Support** personnel are subject matter experts who are focused on mass spec and capillary electrophoresis, so **you'll be able to achieve your scientific goals quickly and efficiently.**

SCIEX Community

The **SCIEX Community** helps you move your science forward and **find the answers you need from SCIEX experts as well as your peers.** In the community, you can share and exchange ideas, protocols, stay up to date with the latest products, and receive support.

SCIEX Software Support

SCIEX Software combines best-in-class capabilities, comprehensive proactive support, services driven by innovation, and a commitment to promptly deliver the right solution to meet the various demands of your lab. With a Software Support plan, you will have the latest software, so **your instruments run at peak performance.**

AB Sciex is doing business as SCIEX.

© 2017 AB Sciex. For Research Use Only. Not for use in diagnostic procedures. The trademarks mentioned herein are the property of AB Sciex Pte. Ltd. or their respective owners. AB SCIEX™ is being used under license.

RUO-MKT-03-5738-A

Headquarters

500 Old Connecticut Path
Framingham, MA 01701 USA
Phone 508-383-7700
sciex.com

International Sales

For our office locations please call the division headquarters or refer to our website at sciex.com/offices

Start Your Path to Success Now: sciex.com/support

